

F670

Leak tester
Standard industrial format



*After 40 years, and 100,000 testers installed in more than 5,000 customers worldwide, ATEQ presents its revolutionary leak tester: **F670**.*

New electronic module, new measurement module, new interface, new accessories... All has been made to improve your quality control.

And yet, inside can be found the latest leak testing technics and technology that will guarantee you the fastest and most accurate leak testing cycle on the market.

ATEQ



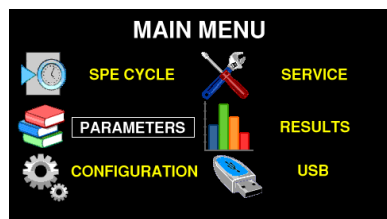
We test You produce

Measurement ranges

PRESSURE DROP MEASUREMENT

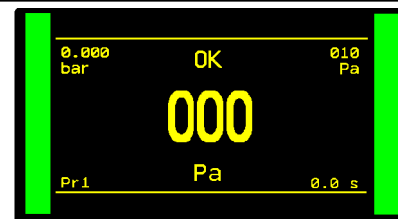
RANGE	ACCURACY	RESOLUTION Maximum
0 – 50 Pa*	+/- (2% of the pressure + 0.5 Pa)	0.1 Pa
0 – 500 Pa	+/- (2,5% of the pressure + 1 Pa)	0,1 Pa
0 – 5000 Pa	+/- (2,5% of the pressure + 10 Pa)	1 Pa

* High accuracy mode



TEST PRESSURE MEASUREMENT

RANGE	ACCURACY	RESOLUTION Maximum
-1 ≤ F.S. ≤ 1 bar	+/- (1.5% of the pressure + 3 hPa)	0.1 % F.S.
1 < F.S. ≤ 5 bar	+/- (1.5% of the pressure + 7.5 hPa)	0.1 % F.S.
5 < F.S. ≤ 10 bar	+/- (1.5% of the pressure + 15 hPa)	0.1 % F.S.
10 < F.S. ≤ 20 bar	+/- (1.5% of the pressure + 30 hPa)	0.1 % F.S.



Main Features

- Differential pressure decay leak measurement. Use in pressure and vacuum.
- Large range of leak measurement (ΔP) F.S. : 50 Pa, 500 Pa or 5000 Pa
- 128 programs
- 2 languages (English + other one) .
- Manual calibration on front panel with calibrated leak
- **Environment:**
ROHS standard

- Test modes:
 - ΔP (Pa, 1/10 Pa)
 - $\Delta P / t$ (Pa/s, 1/10 Pa/s)
 - Flow units (mm³/s, cm³/s, cm³/min, cm³/h...)
 - Blockage test
 - and others, depending on your applications
- **Flexible communication format:**
 - RS232: printer
 - Slave USB: supervision
 - Master USB: USB key to transfert (parameters, results, statistics...)
 - Option Fieldbus: profibus, devicenet, profinet, Ethernet/IP
 - Additional Master USB (option) on back panel (Bar code reader – remote control)
 - Memory card for archiving results (1 Millions)

Applications :

Automotive, domestic appliances, Medical, aeronautic, defense, Fluid and electrical components, food and cosmetic packaging ...



Exists also in waterproof format: F610 And in compact format: F620.

Technical Specifications

- **Physical**
Weight: 15 Kg
Dimensions : (WxHxD) 537 x 157 x 381 mm
- **Interface**
Graphic color screen with simple and intuitive menu-driven operator controls
SMART KEY: programmable key with user's functions
- **Electrical supply**
24 VDC or 90 - 260 V AC / 1.6 A (option)
- **Air supply**
Command 4/6bar
Pressure 1 or 2 bar > test pressure. Clean and dry air
Air quality standard to be applied (ISO 8573-1)
- **Temperature**
Operating: + 10°C at + 45°C
Storage: 0°C at + 60°C



Remote control



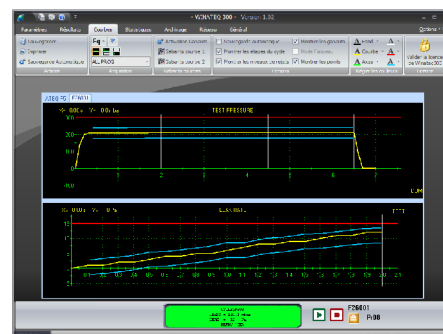
Leak calibrator



Leak jet

Accessories :

Simple remote control TLC60 and advanced TLC6000 – Y valve - WinAteq 300 software - leak calibrator -Connectors...



Options :

- 9 inputs / 7 local outputs
- Electronic regulator
- Dual pressure
- Automatic calibration check
- 2 pneumatic outputs for control of sealing connectors
- 6 x 24 V programmable outputs for external automation...



Head Office:
15, rue des Dames - ZI des Dames - 78340 Les Clayes-Sous-Bois - France
☎ : + 33 (0)1 30 80 10 20 - Fax : + 33 (0)1 30 54 11 00 - e-mail : info@ateq.com
www.ateq.com